



JAMES CUBITT
ARCHITECTS

TABLE OF CONTENTS

INTRODUCTION

1

WHO WE ARE

2

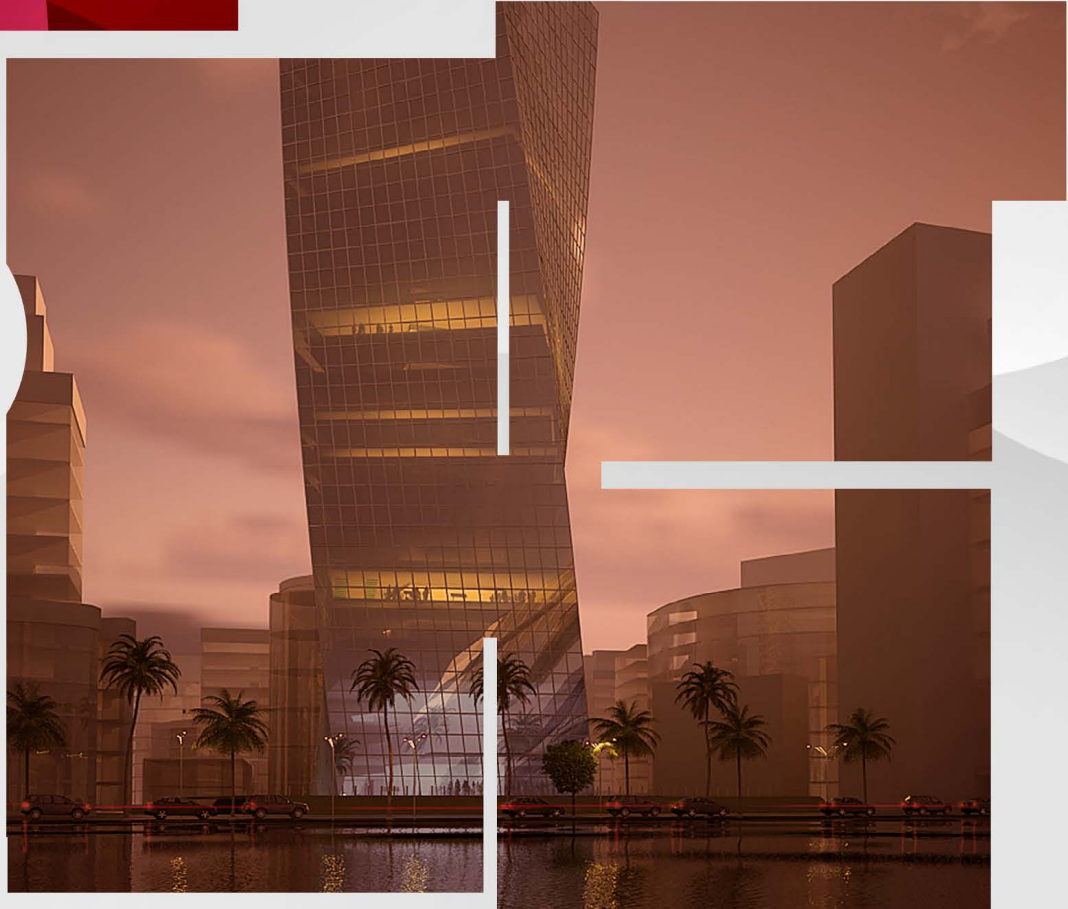
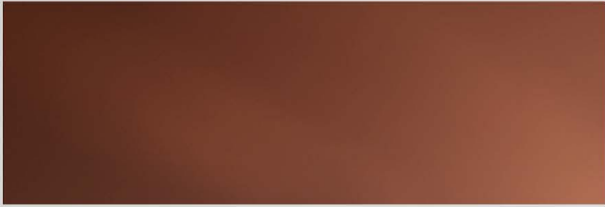
OUR PROCESS

3

HEALTH/ HOSPITALITY

4





INTRODUCTION

01



James Cubitt Architects is an International Multidisciplinary Consultancy Practice having extensive experience in the design and supervision of a wide variety of Building Projects and the Master Planning of major building complexes for Health, Education, Tourism, Commerce, Retail, Industry and Housing.

The practices' continuing global reach currently extends to affiliate offices in the West and East Africa, Middle East, Australia and the United Kingdom, with our associations in India, Egypt, Belgium and Poland. We offer the full range of professional building management consultancy services, including project management and contracting services to support turn key projects as needed.

Over the past five decades the practice has pioneered a sustainable approach to architecture and ecology through a strikingly wide range of work, from urban masterplans, junior schools to universities, individual shops to markets, interior of an office to major office buildings, minor clinics to teaching hospitals, small workshops to major manufacturing complexes, individual houses to large estates, hostels, hotels and towns.

FIRST FOOTPRINT IN AFRICA

JCA in West Africa, was set up by the London practice in Ghana



1950

NEW PARTNERS

Alan Craig and John Baker become partners of the firm Zbyszek Plocki joined JCP as a partner in Nigeria



1968

NEW DIRECTION

Alan Davies becomes the Director of James Cubitt Nigerian offices with Chief Essien Oku



1988

CIVIC CENTRE

James Cubitt Architects was commissioned to design the Civic Centre Lagos



2004

MTN HEAD OFFICE GHANA

The new head office for MTN house Ghana was completed



2015

ACCESS BANK HQ

The new HeadQuarters for the newly merged banks was completed and handed over to client



2019

1947



1958



1985



1991



2010



2017



JAMES CUBITT IS FOUNDED

Practice established in London by James William Archibald Cubitt with Fello Atkinson, Stefan Buzas and Dick Maitland.

JAMES CUBITT IN LAGOS

Lagos office established by John Baker as a subsidiary of JCP London & Dick Maitland retired from the practice.

SHAPING LAGOS CITYSCAPE

CHELLARAMS TOWER (now known as WEMA Tower) was completed

EXPANSION

Significant expansion starts in Middle East. Abu Dhabi & Dubai offices were established.

GROWTH (JCI AND JCD)

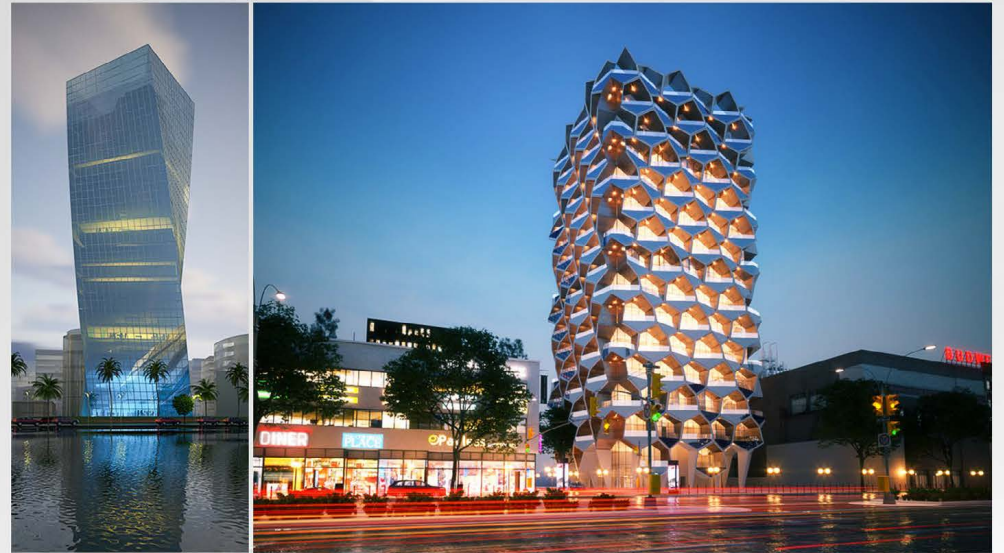
James Cubitt Interiors and James Cubitt Developments were registered as independent companies

FIRST IN EKO ATLANTIC

the first ever commercial tower in Eko Atlantic City was completed and handed over to the client

WHO WE ARE

02



We have practised architecture, all building consultancy services and project management for the past 68 years. We also work closely with engineering consultants and artists as the project may demand.

The current directors have all been with the firm for many years and have been directly involved in our project designs, management and supervision.

As architects, designers, planners and consultants, we use our knowledge to problem solve & create when necessary collaborate with other experienced consultants to deliver successful solutions for the client. With our international presence and local partnerships, we have developed an understanding of different cultures, religions and traditions. This assists us in serving our local expertise with global perspective wherever new opportunities arise.



Union Marble House,
8th Floor,
1 Alfred Rewane
Road, Ikoyi, Lagos.

OS

Exchange Plaza, 58
Uxbridge Rd, London
W5 2ST

LON

18 Mango Tree,
Avenue Asylum Down,
P. O. Box AN55725,
Accra

ACR

International Business
Tower, Business Bay,
Dubai 182551

DXB

14 Byres St, Newstead
Brisbane QLD 4006
Australia

BRIS



MEET THE DIRECTORS



MD.

Alan Davies, Dip Arch, RIBA, ANIA

Alan graduated from Leicester College of Art and Design and obtained a Master's Degree in Civic Design from Liverpool University. He joined the practice to assist in preparing the Masterplan for the University of Nigeria at Nsukka, Nigeria. He then worked as a Resident Architect on three major industrial projects in Lagos for Lever Brothers, Warner Lambert and Upjohn. In 1987 he became Managing Director of the practice in Nigeria, and has been responsible for the design of many projects including the British High Commission office in Abuja, together with five houses for their top officers including the Deputy High Commissioner. His experience includes many head office buildings, high end residential apartments and houses, government, retail, schools, industrial developments and universities.



DIR.

Abiodun Imana, MNIA

Abiodun studied architecture at the Ahmadu Bello University in Zaria, Nigeria, graduating with MSc Architecture in 1980. Since then, he has been employed in the private sector working on industrial, institutional and commercial projects for private sector clients.

He is a recipient of the British Chevening scholarship which enabled him to undertake a mid-career course in Housing & Human Settlement at the University of Newcastle-upon-Tyne in 1996-1997.

Abiodun has been working in James Cubitt Architects since 1998. In 2004 he became a Director in James Cubitt Architects and has been involved in a variety of projects for multinational clients such as Halliburton, Baker Hughes, Citibank, Ford Foundation and Coca-Cola.



DIR.

Ayodele Alabi, MED Arch, Msc EDE

Ayodele studied architecture at the University of Lagos, Nigeria, graduating with MED Architecture in 1982. He also has an MSc Environmental Design Engineering obtained from the Barlett School, University College London 1986. He has since been employed in the private sector working on industrial, commercial and residential projects for both the public and private sectors.

Ayodele joined James Cubitt Architects in 1996 as Project Architect and Computer Manager. He was appointed a director in 2004. He has been involved in numerous projects such as United Nations Common Premises Abuja, Diamond Bank Head Office Lagos, Standard Chartered Bank Branches, Nestle Warehouses, Unilever Factories and Centre Heights Residential Development.





AD.

Hakeem Ibitowa, MNIA MMP

Hakeem studied architecture at the Federal Polytechnic, Nasarawa, as well as the Polytechnic of Ibadan in Nigeria. He graduated in 1990 with Upper credit. He proceeded to the University of Ibadan where he obtained a master degree in Managerial Psychology.

He has work experience spanning close to two (2) decades in the private and public sector establishments working on industrial, institutional and residential projects for the Federal Government of Nigeria.

He joined James Cubitt Architects in 2008 and was appointed an Associate Director in 2014. He has been involved in numerous projects such as Greenfield industrial developments for Nestle Nigeria Plc and Olam Nigeria Limited both in Sagamu and Diamond Bank Head Office Annex in Lagos.



AD.

Seun Koya, MNIA

Seun studied architecture at the Obafemi Awolowo University, Ile-Ife, Nigeria obtaining both a BSc in Architecture in 2006 and a Masters in Architecture in 2008. He had previously attended Yaba College of Technology where he obtained a National Diploma in Architecture in 2001.

He joined James Cubitt architects in 2009 starting out in his service year as a Graduate Architect. He has been involved in good number of projects across different sectors including The Wesley Residential Project, NLNG Port Harcourt Head Office Complex, Olam Factory in Sagamu.

He was appointed an Associate in 2019



AD.

Tubi Otitooluwa, MNIA

Tubi graduated from the University of Lagos with a B.Sc. (Hons) Architecture and M.F.Design (Distinction) where he finished with the best graduating studio project. He joined the Practice in January 2011 as an architect and has since worked on JCA's prominent projects.

Additionally, Otitooluwa brings to the table strong research based design synthesis, the ability to clearly communicate graphically design intent to stakeholders, manage expectation on projects and a campaign to fully integrate BIM into the office workflow.

He was appointed an Associate in 2019. He has been involved in numerous projects, including a 9.4-hectare Healthcare Campus development, Head Office building for Dangote amongst others.



DESIGN. CREATE. REPEAT



OUR PROCESS

03



STEP
01

STEP
02 
**PRELIMINARY/
CONCEPT DESIGN**

CLIENT BRIEF DEVELOPMENT BRIEF
ANALYSIS
PLANNING AND SITE LAYOUT
CONCEPTUAL PROPOSAL AND 3Ds



STEP
03

STEP
04 
**CONSTRUCTION
DOCUMENTS AND
TENDER**

CONSTRUCTION DRAWINGS
DETAILS SPECIFICATIONS
BOQ
TENDER PROCESS AND AWARD



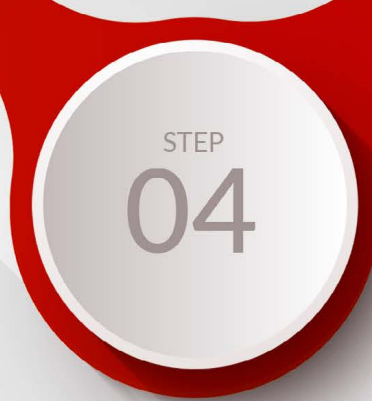
STEP
05



STEP
02

STEP
03 
SCHEMATIC DESIGN

DESIGN DEVELOPMENT PREPARATION
OF PLANNING DRAWING



STEP
04

STEP
05 
**CONTRACT
ADMINISTRATION**

CONTRACT ADMINISTRATION
SITE INSPECTION
CLOSE OUT

HEALTH/ HOSPITALITY

04



HOSPITAL & WELLNESS CENTRE

Bayelsa State, Nigeria



LFZHOTEL



NOVOTEL

NOVOTEL is a 3 Star hotel situated in Port Harcourt, Rivers State – Nigeria. Commissioned for the design of the hotel in 2001, the building was a product of the collaborative venture between two contractors and was completed in 2004. JCA (James Cubitt Architects) were involved from the concept through to supervision stages. Facilities provided include: 120 bedrooms, gymnasium, spa, bar, restaurant, outdoor swimming pool, outdoor lounge. The challenges experienced by the design team were the swampy terrain of the site, dealing with locals, financial constraints and finding good artisans to execute the job.



MARINATOWERS

In an attempt to develop a unique and iconic tower, VINTAGE HUBB has commissioned JCA to design a mixed-use tower known as THE MARINA ADMIRALTY TOWER. The 41,500m² tower is designed to integrate leisure, play, work, and living in a way that leverage each benefit without the interference. The General concourse at the ground level is a covered foreground that distribute into the 3 major zones in the tower. The large floor plates forming the base of the tower consist of the parking floors facing the third Mainland Bridge and the banquet hall to the Marina. Over the tower base is a recessed mid-rise which is the office block while the recessed difference accommodates a sky-garden. At the top of the Mid-Rise tower, the leisure facilities and roof top pool and bar gives a stunning view of 5 cowrie creek, the marina and the old Lagos Island. The towering form above facilities floor gives a 360 degrees unique view of the entire water and landscape. The first 8 levels accommodate the hotel suites while the upper 5 levels house the service apartments.

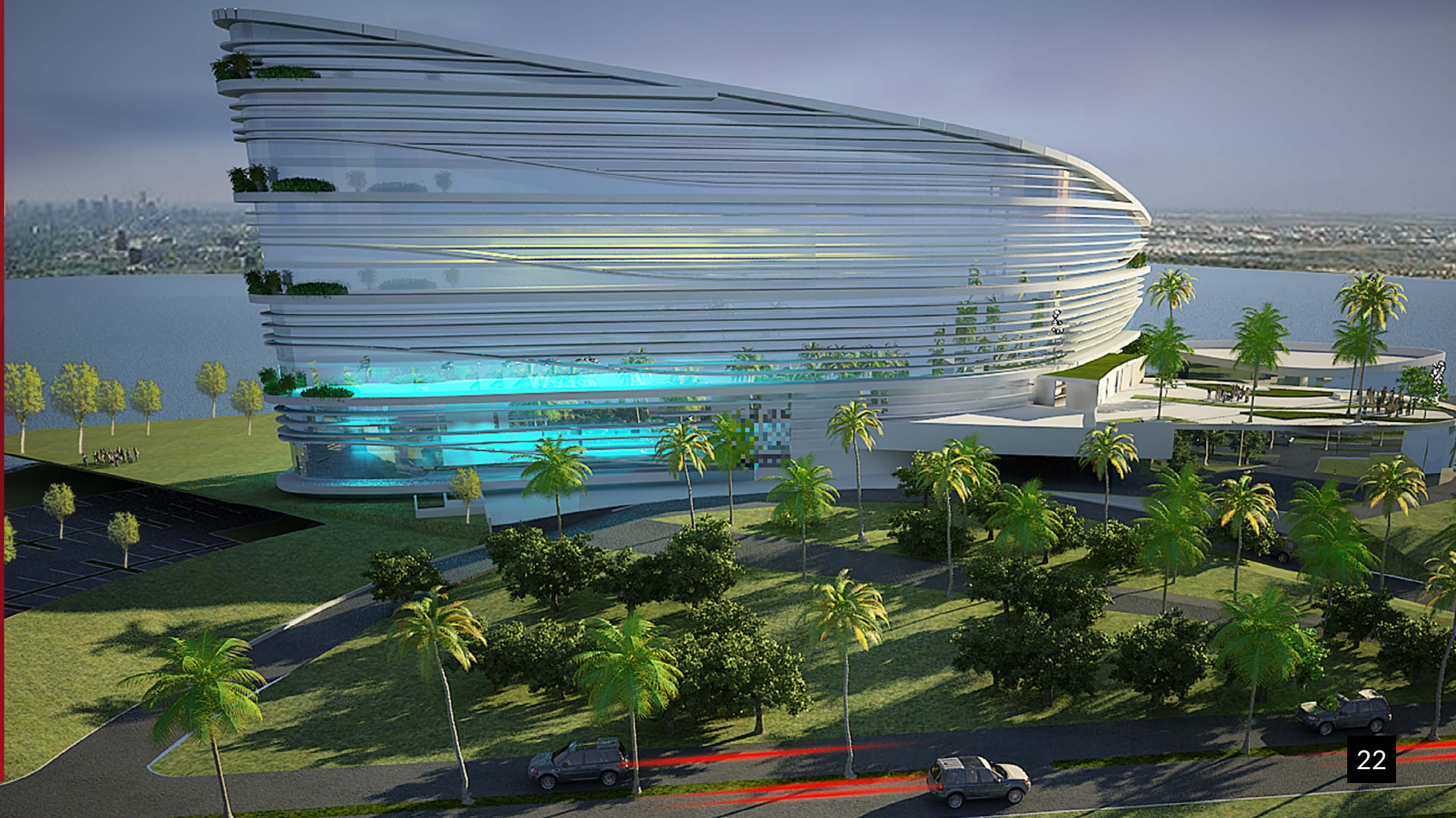


TRANSCORP ABUJA

Transcorp Hilton, Abuja is described as the 'beating hotel' of the Federal Capital Territory. Designed to meet the Conrad Hotel standard, this architectural masterpiece radiates luxury. The building achieves a laudable 42% reduction in water usage with the use of waterless urinals, low flow faucets and dual flush water closets.

Guided by the potential impact of traffic build-up along the main entrance and Conference Centre, James Cubitt Architects proposed an expansion of the Shehu Shagari entrance as an alternative entry / exit route. Our designs take into consideration aesthetics and functionality, with adequate care for any resultant impact on surrounding activities. Transcorp Hilton, Abuja is designed to meet the LEED® Certification criteria; a building for man and the environment





COMMERCIAL

05



DANGOTE

The Dangote Head Office building represents an exceptional integration of return on investment, strict planning regulations and innovative form adaptation to context and scale.

Situated on Alfred Rewane Road, a premium real estate zone, we had two challenges to exploit: The development must optimize the use of the site, and most definitely, elegantly portray the grand image of the organization whose head office will be located in it.

Four floors of ramp parking seats above of the site, the choice of elevated parking was informed by the high water table which makes multiple basement floors prohibitively expensive. Faceted perforated Aluminum Panels clad the parking floors, winding from the soffit of the double volume entrance lobby to the last parking floor.

The form rising eleven floors above the parking base is composed of 2 sets of identical towers at varied heights butting each other on 2 sides to create a radiating petal form .

The building consist of a 200 capacity auditorium style conference hall on the ground floor, 300 capacity banquet hall overlooking a golf course on the 16th floor, generous sloped parking and a state of the art facade cladding and glazing system.



ACCESSHQ

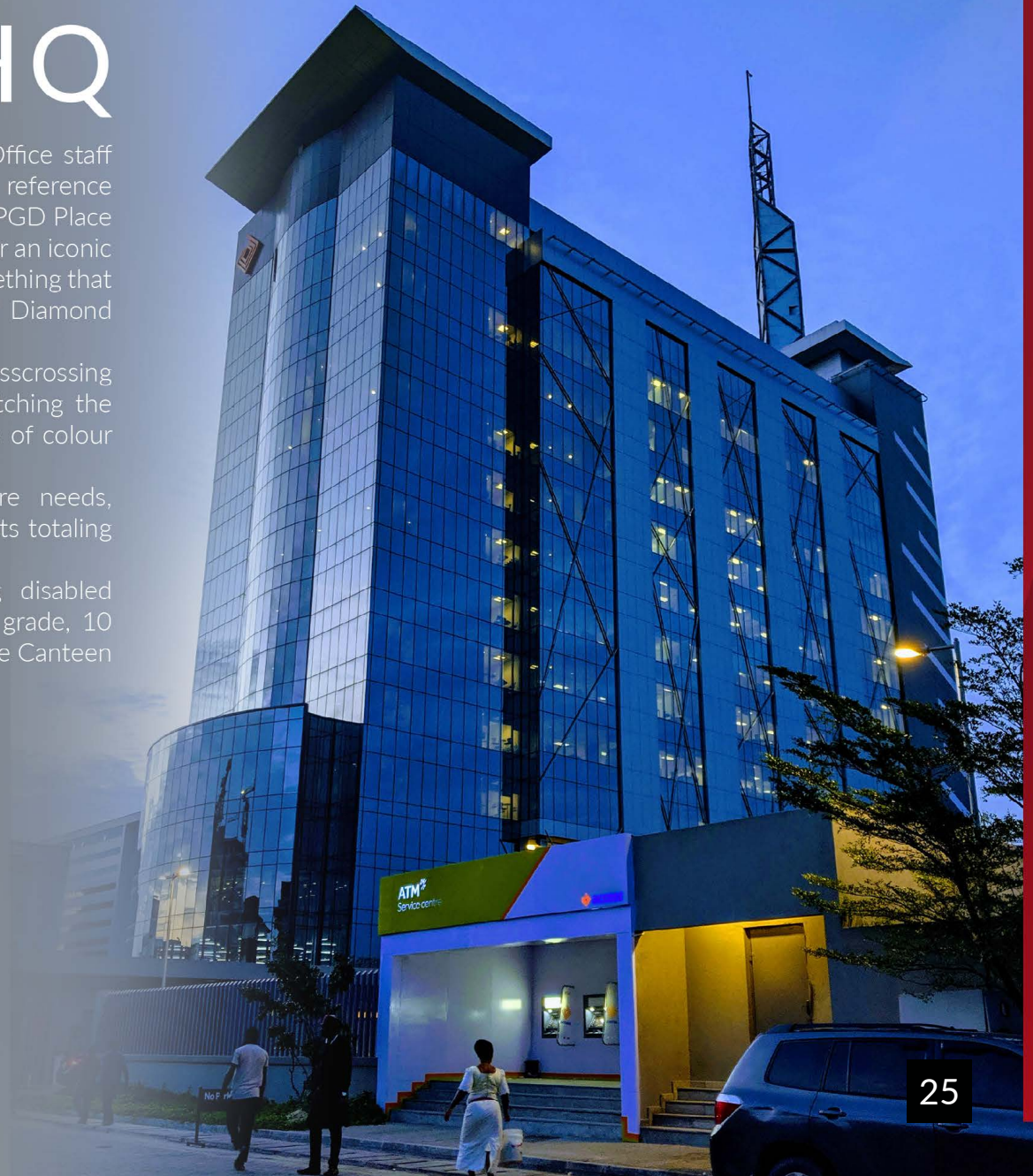
The need to bring all Access Bank Head Office staff together gave birth to this project. Taking reference from the completed former Diamond Bank PGD Place (another JCA project), the bank requested for an iconic structure that will be a reference point. Something that is characterized by the unique features of Diamond Bank Plc.

It is a 14 storey structure, with crisscrossing rectangular profiles across the façade, matching the branding of Diamond Bank with the choice of colour being grey tone all through.

Expected to serve immediate and future needs, accommodating 1,500 staff, it sits on 2 plots totaling 8,000m² approximately.

With 258 car parking spaces (including disabled parking), there are 3 parking floors above grade, 10 office floors and a 14th floor that houses the Canteen and Conferencing.

The entire floor area is 25,432m².



ALPHA ONE

The philosophy of James Cubitt Architects is to design functional buildings that are timeless. These buildings meet current needs of the client, and in future, will still be very practical functional buildings.

Standing at approximately 77m high, the Alpha One sits on a 5,003m² plot of land in the Harbor Light district of Eko Atlantic City.

It comprises fifteen (15) floors, and a landscaped podium level that has some parking space. Alpha One is not just the first commercial development in Eko Atlantic City, it is the first to break ground Eko Atlantic, hence the name Alpha One.

Working to British standards, it has a green roof and a ventilated cladding system. It is completely double-glazed on all sides, allowing views to Atlas Cove, Marina and the Atlantic. It allows natural light on all sides.

Other features of the Alpha One are the use of duplication to allow for a comfortable internal environment. The façade openings are created by parallel projected windows, which is another unique element of this project.

Eko Atlantic City is in a highly saline environment, making it extremely important to use materials with specifications that will resist the harsh environment. This, the JCA team achieved seamlessly.



PGD PLACE

A small but striking, state-of-the-art building, PGD Place is designed to provide the bank's first drive-through branch. The layout consists of three intersecting squares. Access to the ATM's which are below the building was designed in a herringbone pattern that was then translated vertically to create the form of the building.

The faceted facades are further treated to echo the Diamond Bank branding by the application of aluminum sections at random angles across the glazing.

The main staircase is located in the apex of the lending intersecting sequence giving an exciting view to the masses of car drivers negotiating the Lekki Toll.



FORD FOUNDATION

The design of the Regional Office for The Ford Foundation, located on a small plot in Banana Island, was informed by space planning and fitting out / interior design commissions carried out by JCA for The Ford Foundation in two leased premises in earlier years.

The resultant design was the creation of a studio environment. The working floor is elevated over the ground floor reception and vehicular drop-off with ancillary functions of seminar room, canteen, stores, and driver's accommodation.



MTN GHANA

The iconic competition winning design for MTN House, Accra was lozenge shaped on plan offering a curved elevation to independence Avenue. The circulation core, however, was extracted from the floor plate into separate tower at the rear, connected to the main building by bridges.

The curtain wall was to be shaded at each level with horizontal aluminum sun louvres. A glazed, enclosed atrium spanned the height of the building from the basement to the roof and at ground floor level the floor of the atrium was glass allowing natural light to penetrate the basement.

Despite winning the competition, this design was subsequently deemed to be too avant-garde for MTN and JCA was instructed to prepare two new designs for more rectilinear, shorter buildings, with bigger floor plates on the assumption that they would be less costly and would be more economical to fit out in terms of space planning.

One of the two designs has been built and completed in 2016. This boasts a spacious, double height reception lobby which houses security screening and generous waiting areas whilst giving on to a Media Centre on the public side of security and the MTN restaurant and lifts to the offices after security. The restaurant spills out onto a terrace served by an outside bar.



CITIBANK

The Citibank complex, which was designed in 1996, was the first building in which we were allowed to take a serious account of sustainability. The client was persuaded to double-glaze the fenestration and insulate the walls. As was customary at the time, deep shading was utilized to reduce solar penetration and heat gain.

The building serves both as Head Office and Head Office Branch for the bank. The building's IT requirements spiraled during the course of design, creating the need for the provision of additional IT cabling in vertical ducting attached to the perimeter columns. This was not a requirement that came with the original plan but the JCA team ensured that the client's needs were met, notwithstanding the challenge it presented.

The floor plates were maximized, keeping the building low, whilst provision was made in the structure for later provision of an additional floor, and by carrying the central core one floor higher than necessary.

RESIDENTIAL

06

SKYGARDEN

One thing that makes this project stand out is the omission of entire floors, replaced with a garden in that space. The garden opens to the sky, prompting the name 'Sky Gardens' for this project.

A beautiful view of the lagoon is enhanced by the way the building is structured. The design has an interesting layout, a continuous series of 'Vs' as against a single line layout affords a wider view.

As is usual with luxury residential buildings, the Sky Gardens has a pool, squash court, tennis court, jetty and other ancillary facilities that make living a pleasure located on the elevated podium.

Additional benefits include valet parking service for all residents below the podium



THE HIVE

The client invited James Cubitt Architects to design and execute a sustainable luxury High-rise residence in Ikoyi, Lagos. The residential development will provide a new focal point to the Ikoyi skyline and become a defacto luxury standard in Lagos.

The vision is to develop a 15-story self-sustainable residential building with exquisite 1-4 bedroom residences capped by a 2 level Sky Villa with a private pool deck.

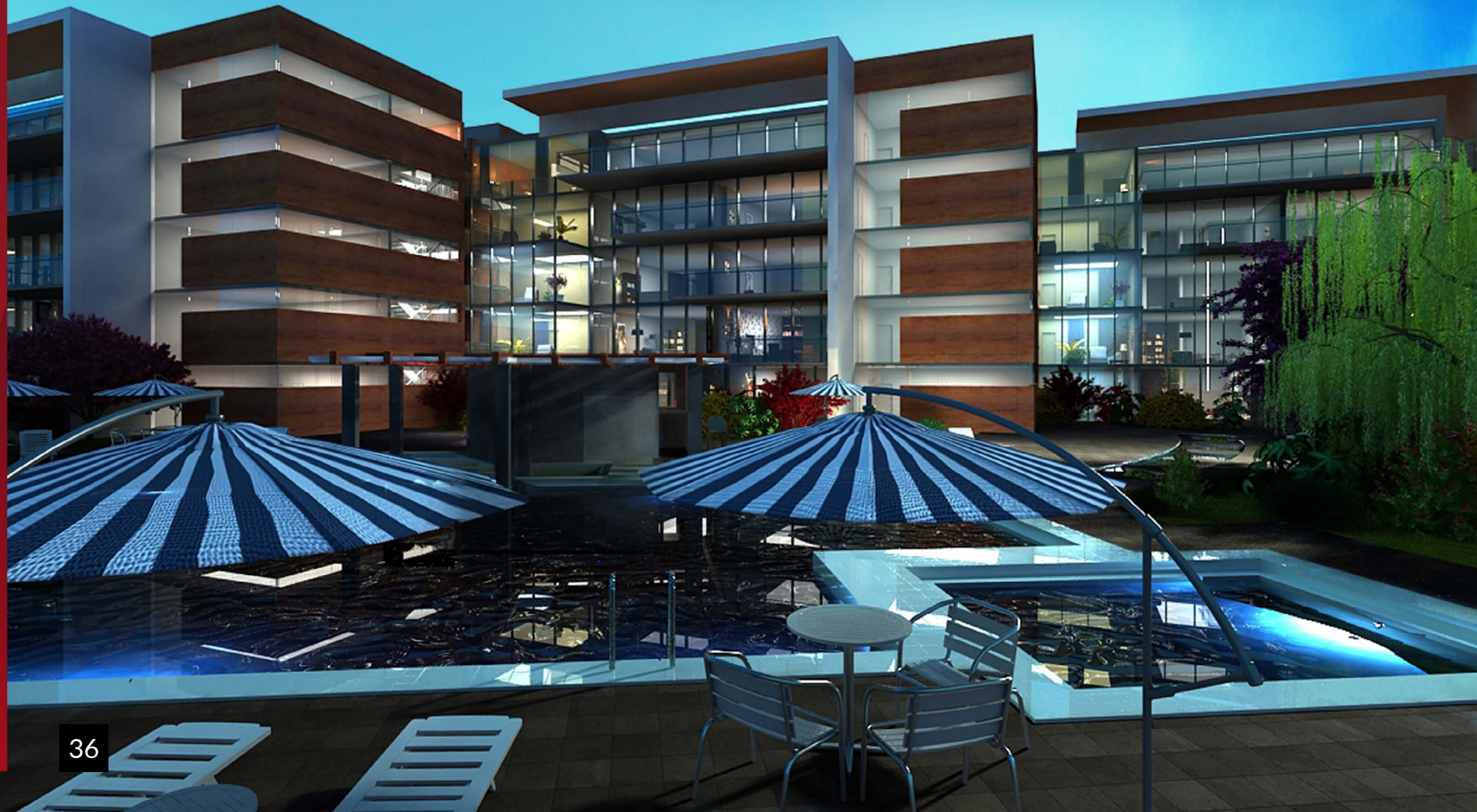


LIFESTYLE DEVELOPMENT





ONEMOORE



CENTRE HEIGHTS

Centre Heights is a gated residential development of 27 apartments made up of 6 units of 4 Bedroom flats, 12 units of 3 Bedroom flats, 2 units of 5 Bedroom Maisonettes, 4 units of 4 Bedroom Maisonettes and 3 Penthouse flats. It has sporting and relaxation facilities such as a Large Swimming Pool, Lawn Tennis Court, Squash Court, Fitness Centre and Sauna.

The development is fully serviced with Water Treatment Plant, Sewage Treatment Plant and Power Generators.

Being a commercial development the client had requested that the use development of the land should be maximized. This had to be balanced with comfort and ambiance for the high class level of clientele expected to reside in the development.

The main challenge faced was to keep as many existing trees as possible, Lagos State Regulation, states that for every tree cut down, 5 new trees are to be planted. Another challenge was to ensure that all bedrooms are cross-ventilated while maintaining privacy and all toilets are ventilated all in line with Lagos State Regulations



COBBLESTONE TERRACE



RED FIVE



FRENCH EMBASSY

This project is a redevelopment which will provide new consular facilities, visa offices and include luxury flats. It is a proposal of James Cubitt Developments which takes the old embassy site in Queen Drive in a BOT arrangement, solving the French Embassy accommodation problems at no cost to the French government.

To guarantee the straight security demands of a diplomatic mission the scheme is zoned to separate consular from residential traffic. The Head of Mission's private residence is on the creek-side whilst the block of apartments behind which looks over the mission to magnificent views of Five cownie creek and beyond, houses embassy staff and 14 additional apartments for sale or lease which will fund the development.



GEORGES COURT



INDUSTRIAL

07



NESTLE

Completed in 2009, this greenfield Industrial project was executed by James Cubitt Architects for Nestle Nigeria Ltd who wanted an ultra-modern factory of international standard to commence the production and processing of Maggi Seasoning Cubes in Nigeria. The factory is located in Sagamu Ogun State Nigeria

A few years down the line, the factory has won to its credit quite a number of international onwands. Area is about 36.3 hectares with only a third of it developed so far with great plans for future expansion.



OLAM

Another greenfield industrial development that lies adjacent to the Nestle Factory Sagamu, was designed for Olam Nigeria Limited who required a Sesame Seed Processing Factory (6,500m²) and 12,000m² of Warehouse facilities. The site area is approximately 24hectares.

As with all industrial facilities, the project includes an Administrative Building which includes staff amenities, utilities and other ancillary facilities. It was completed in 2013.



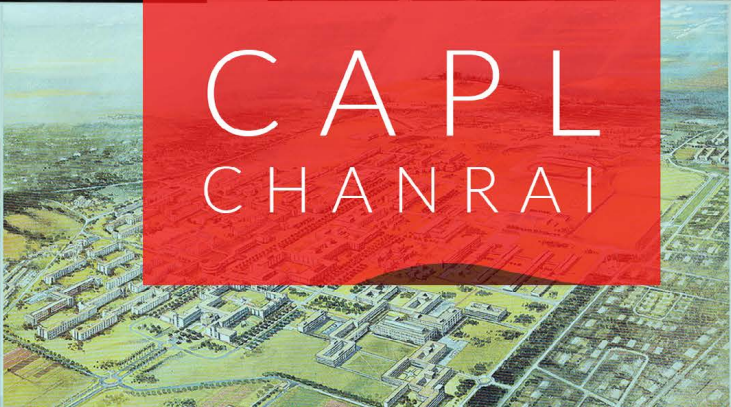
SIGNATURE

08



BRITISH COUNCIL
 WEMA BANK TOWER
 NATURAL HISTORY MUSEUM
 MOBIL HOUSE
 MEARSK GHANA
 UNITED NATIONS
 CIVIC CENTRE
 SENATE BUILDING
 UNN NNSUKA

CAPL
 CHANRAI



OAU

NATURAL HISTORY MUSEUM

James Cubitt Architects was commissioned to design several of the significant buildings in the Obafemi Awolowo University, Ile-Ife in the 1970's.

These projects include the Health Sciences Building, the Natural History Museum, the Conference Centre and the Physical Sciences Building, also referred to as the White House.

All of these, were built in the 70s and still stand strong till date, except for the National History Museum which, whilst being designed in the 70's, was actually built about 40 years later unknown to James Cubitt Architects!



UNN

ENUGU CAMPUS MASTERPLAN

It will not be farfetched to say James Cubitt was a part of this project from the very beginning. Walking the hills of Nsukka in the 1950s, the late sage, Nnamdi Azikiwe, and the man, James Cubitt, selected the site for the University of Nigeria, Nsukka. The first master plan prepared by James Cubitt Architects gave birth to the structure of UNN, Nsukka as we see it today and it was followed by four further JCA master plans.

JCA's three major buildings at UNN are the Faculty of Physical Science and the Department of Mathematics, the Library and the Faculty of Arts. It is worthy of note that at the time, the library was the biggest in Sub-Saharan Africa.



UNN

NSUKKA CAMPUS MASTERPLAN



UNILAG

SENATE BUILDING

Brief Project Summary

Towering above other buildings in the university campus, the 14 storey edifice designed in 1980 was completed in 1985. It is a combination of executive offices for the Vice Chancellor and Registrar, a new Senate chamber and general offices for the university administration.

The building is covered with heavy, deep, shading louvres reducing the need for air-conditioning. Its mosaic clad louvres designed to be made of pre-cast concrete in 3 storey high panels were, in fact, constructed with in-situ sprayed render on steel mesh, on reinforcing bars.

The Unilag Senate Building demonstrated the importance of fire stopping of service ducts between floors as an electrical fire, fifteen years after completion, was completely contained within the duct and prevented from spreading.





© 2022

jca@jamescubittarchitects.com
+234 809 990 2207, +234 809 990 2208
www.jamescubittarchitects.com
@ james.cubitt.architects